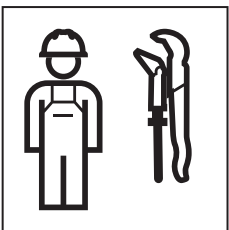


# INSTALLATION MANUAL

MONTERINGSANVISNING  
MONTERINGSANVISNING  
MONTERINGSVEJLEDNING  
ASENNUSOHJE

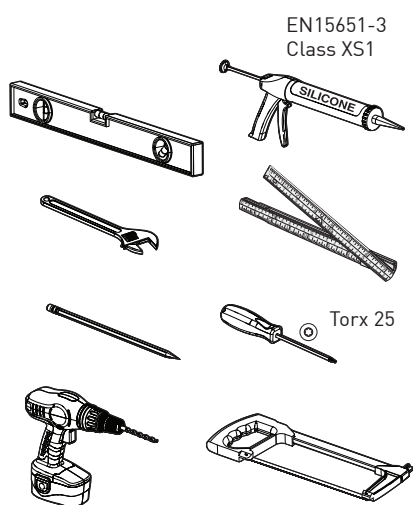




Care Instructions  
Skötselinstruktion  
Veiledning for stell  
Plejevejledning  
Hoito-Ohje

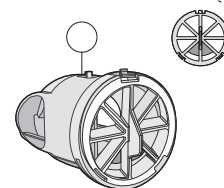
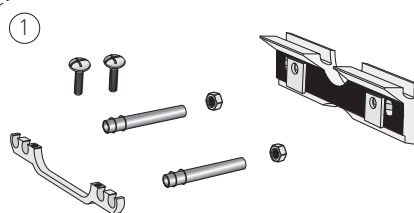


SE: Säker Vatteninstallation

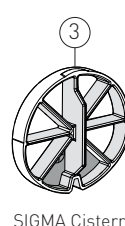
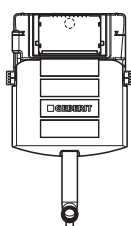


EN15651-3  
Class XS1

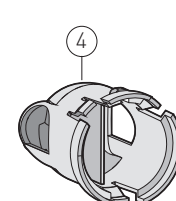
Torx 25



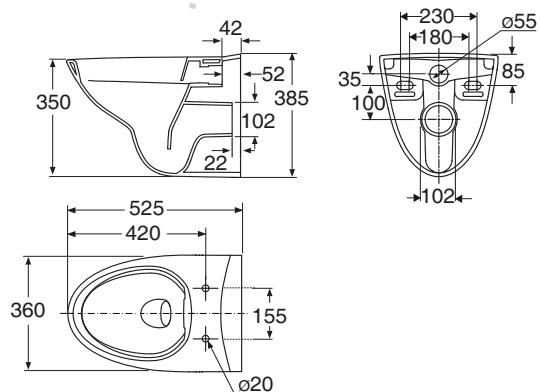
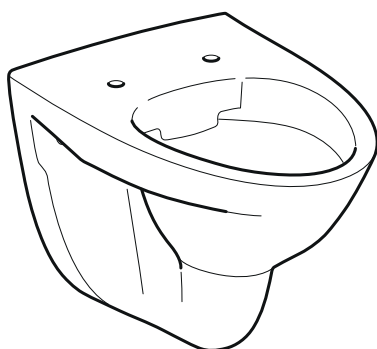
SIGMA Cistern

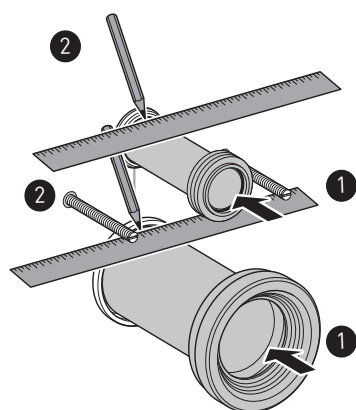
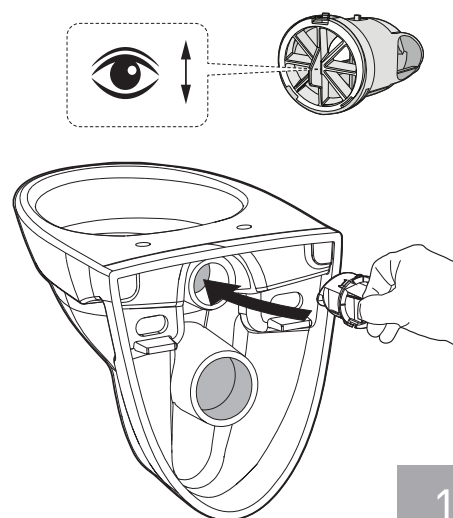
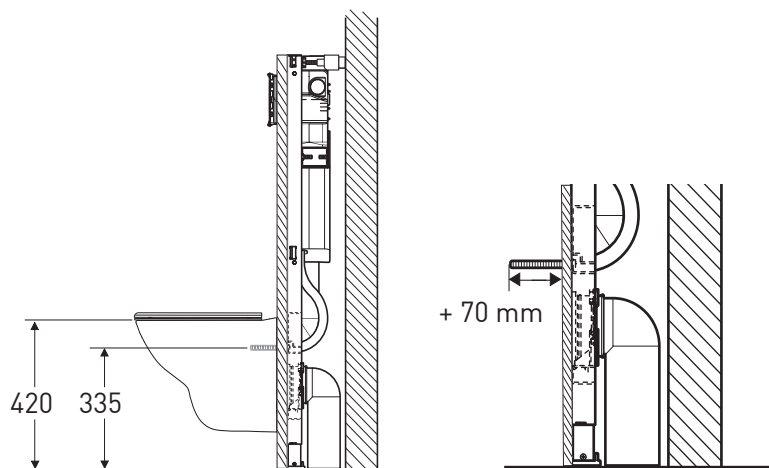


SIGMA Cistern

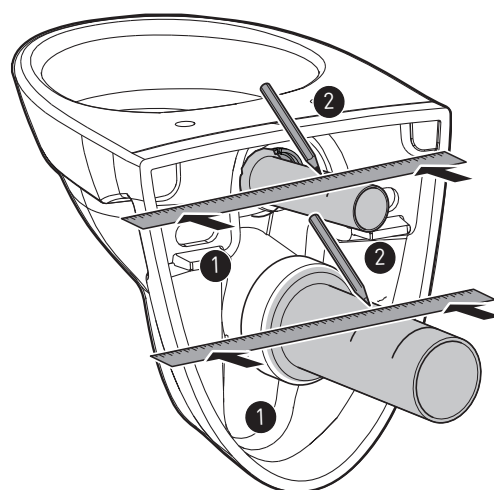


## Install WC with visible fixing

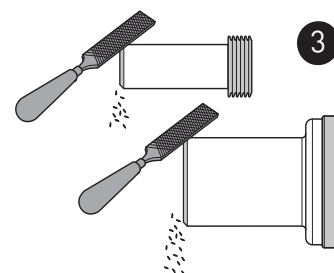
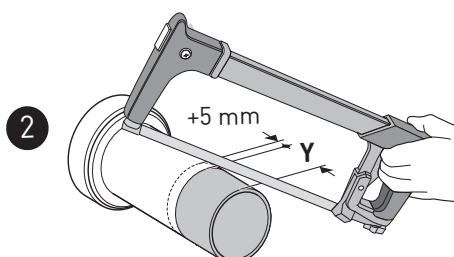
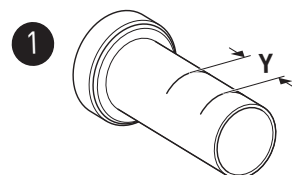
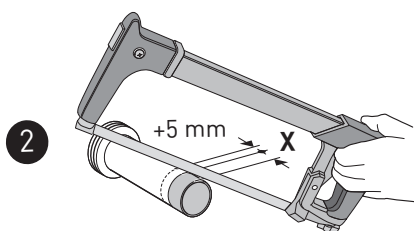
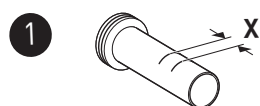




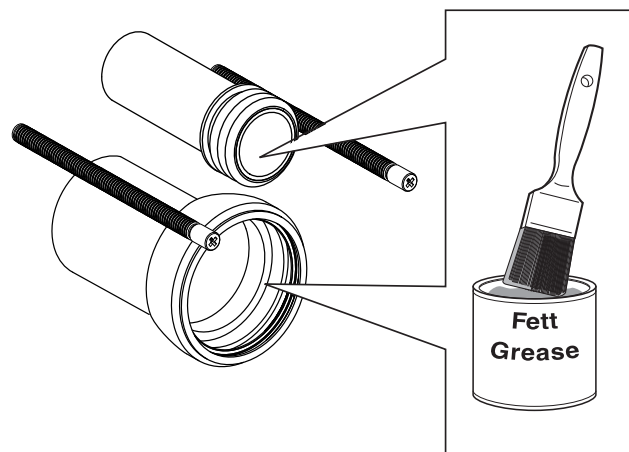
2



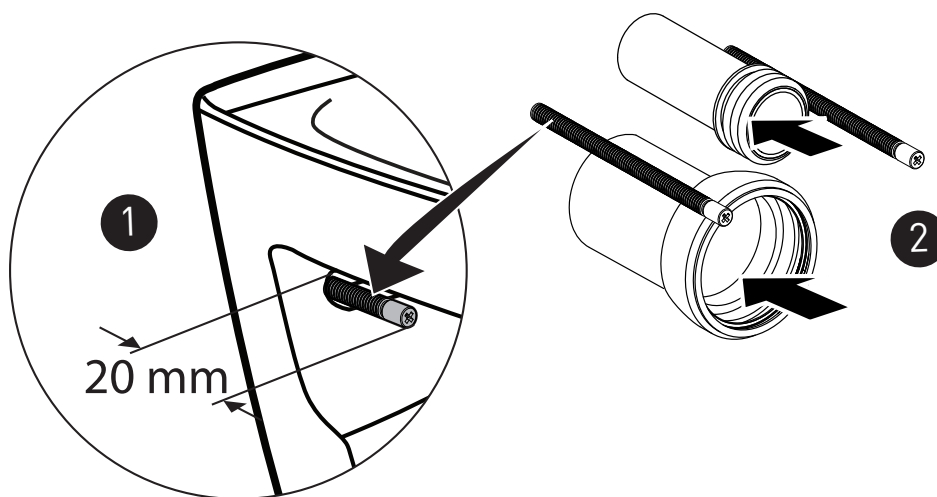
3



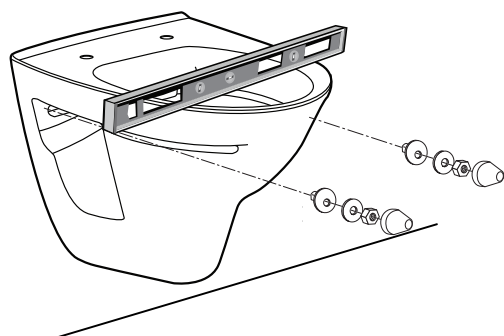
4



5



6

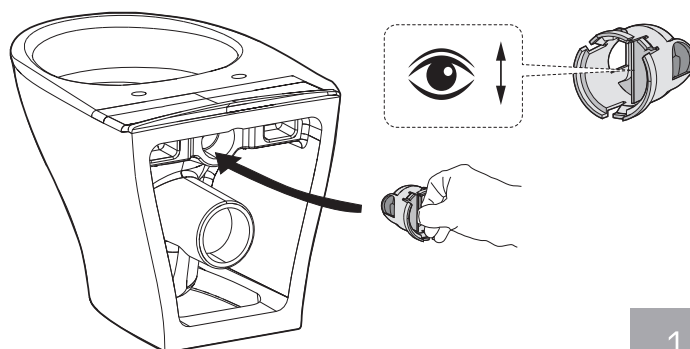
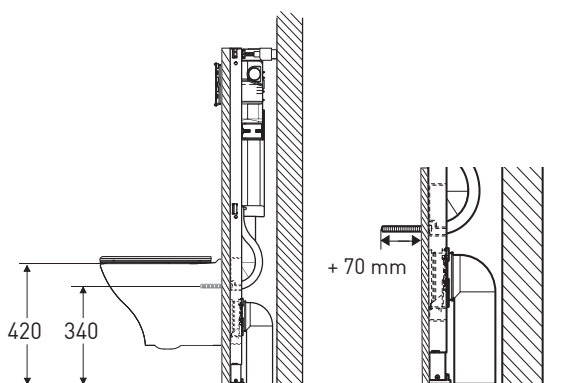
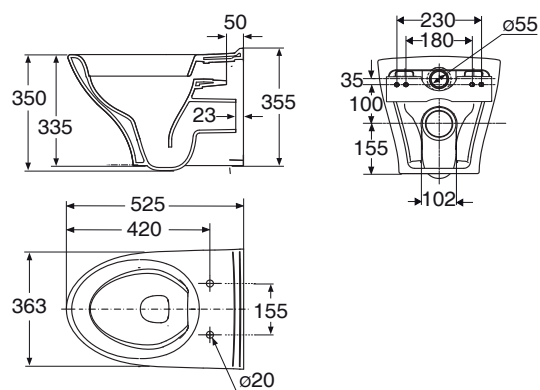


7



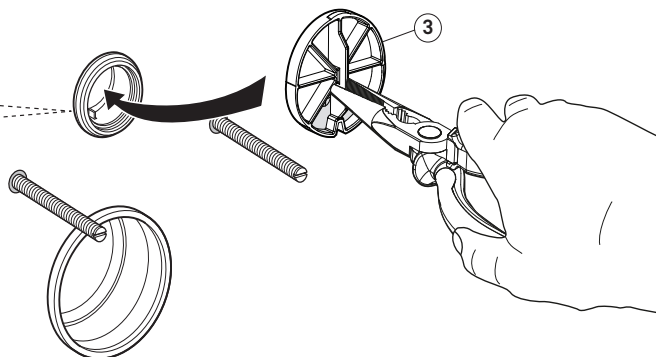
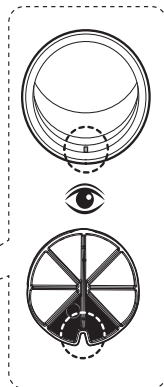
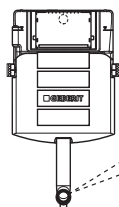
8

# Install WC with hidden fixing

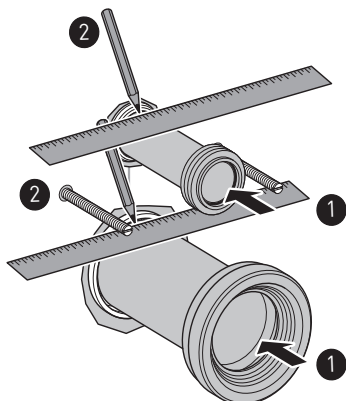


1

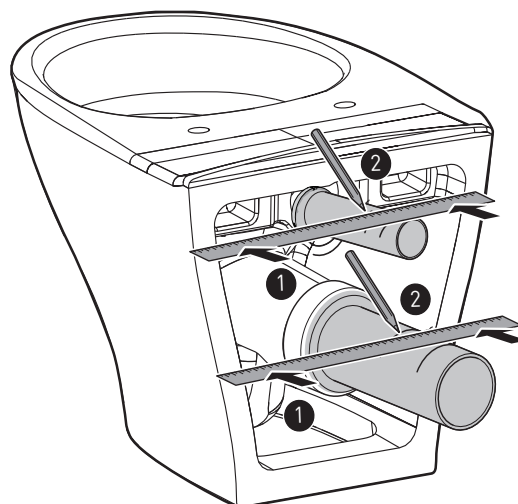
**GEBERIT  
SIGMA Cistern**



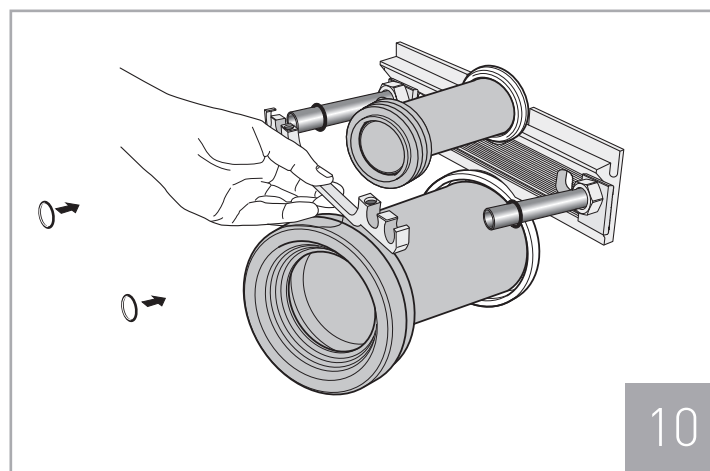
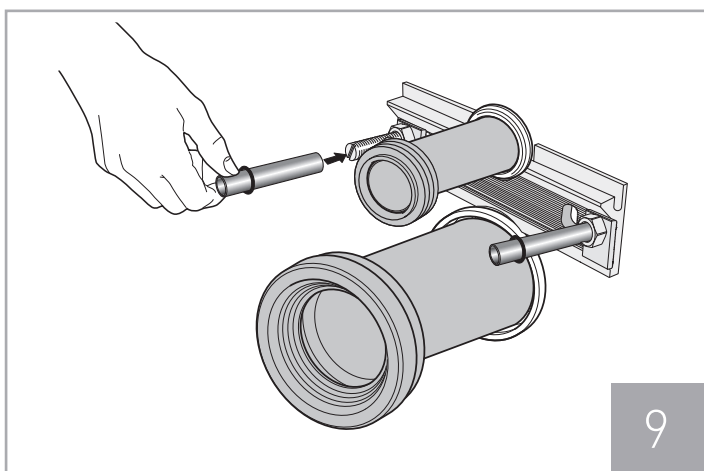
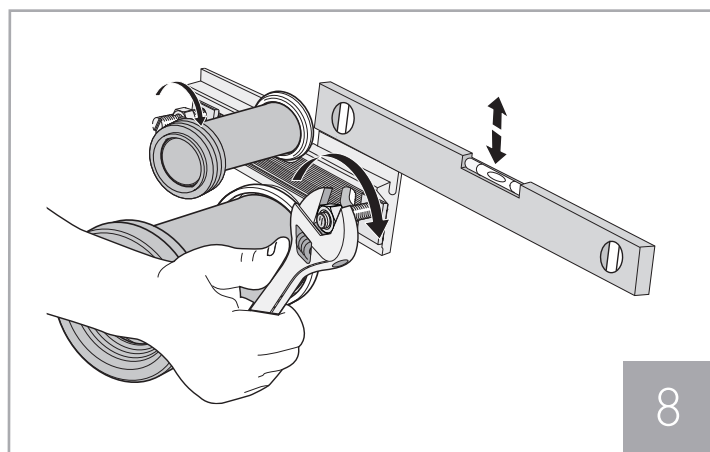
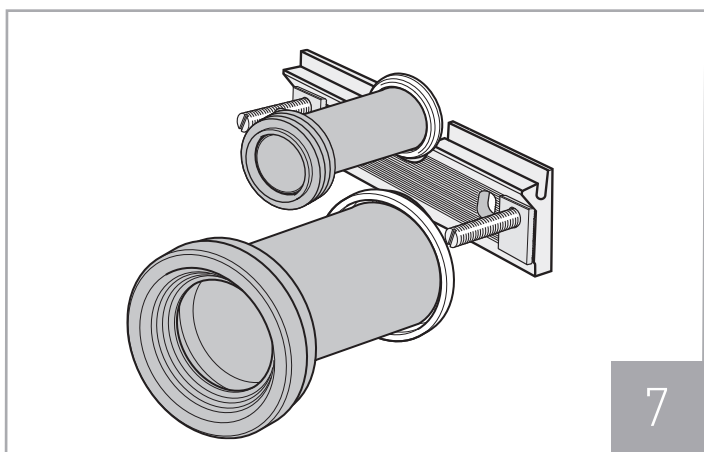
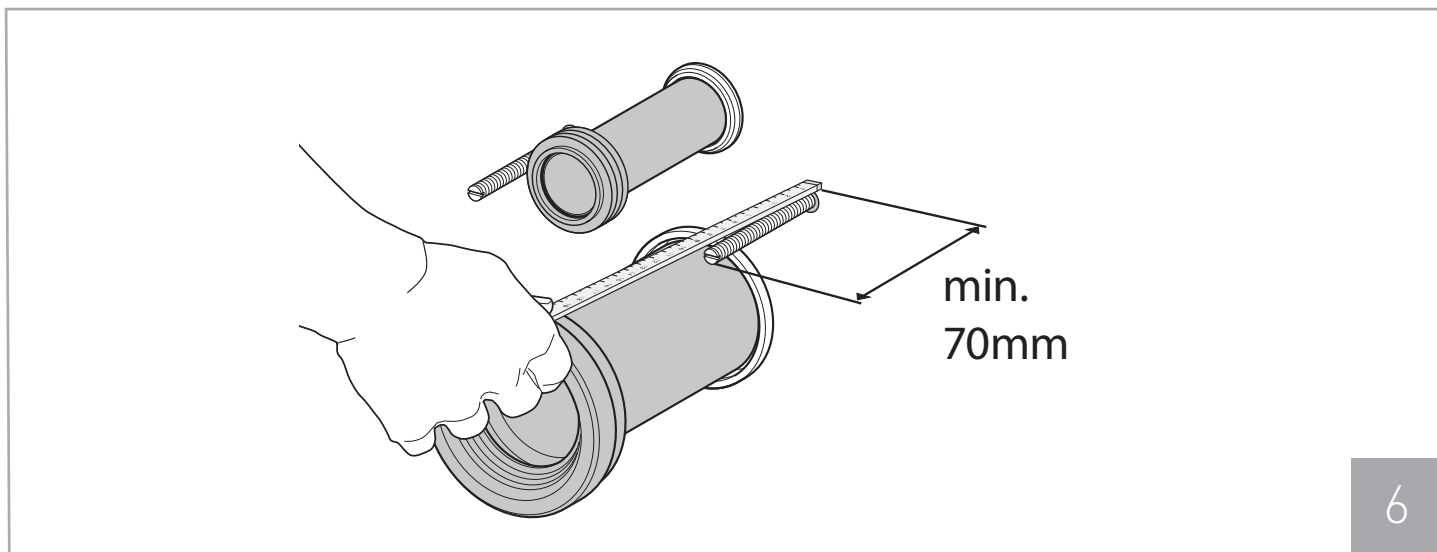
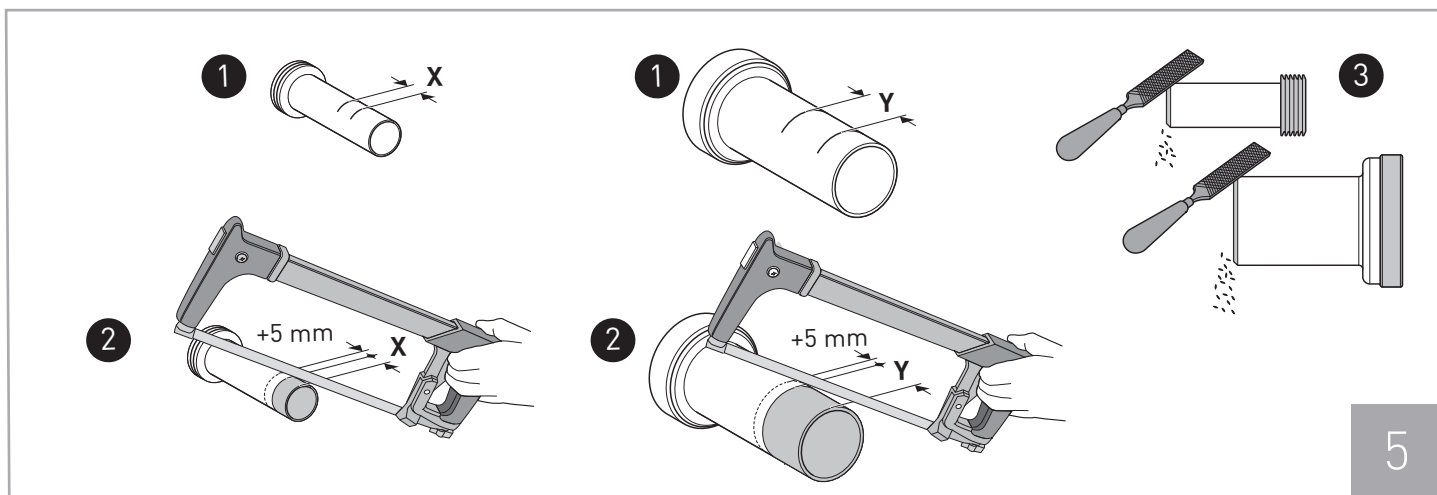
2

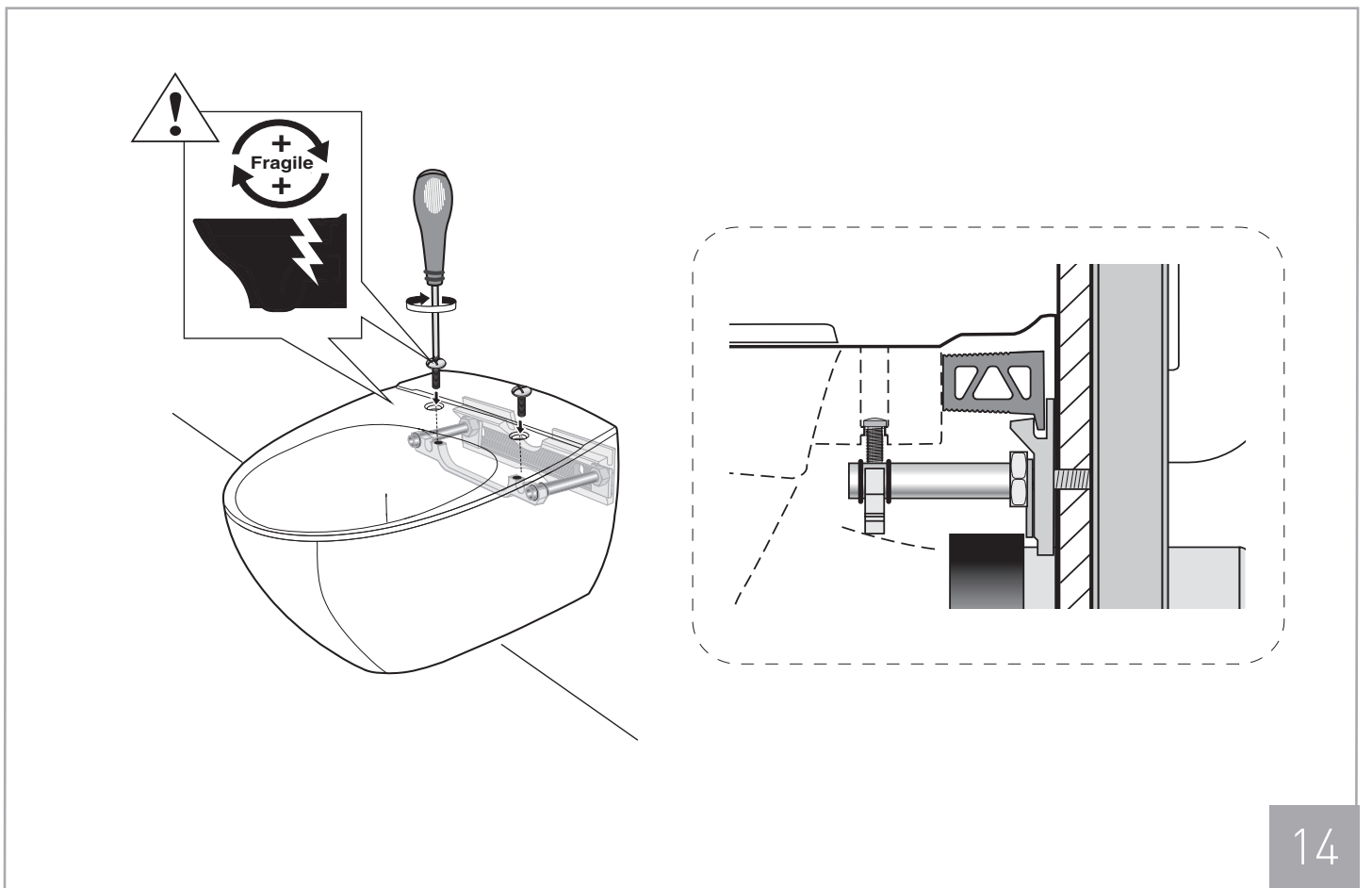
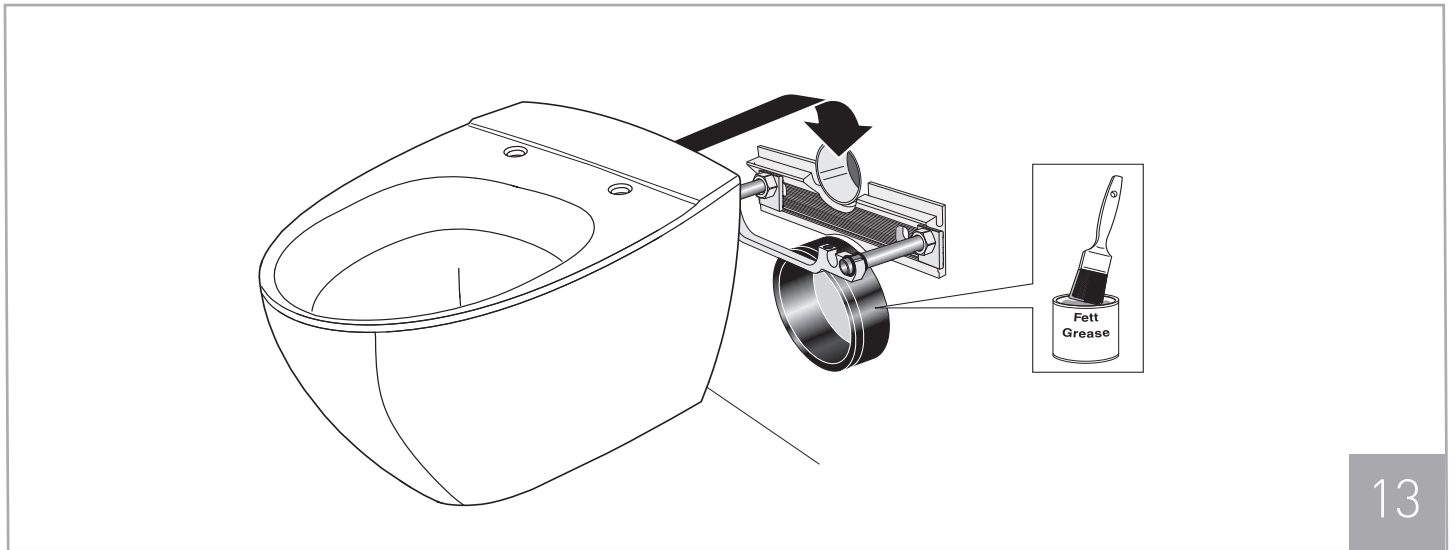
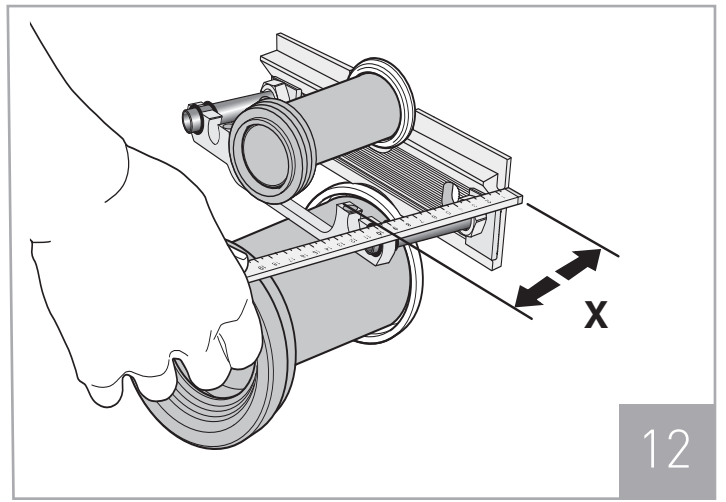
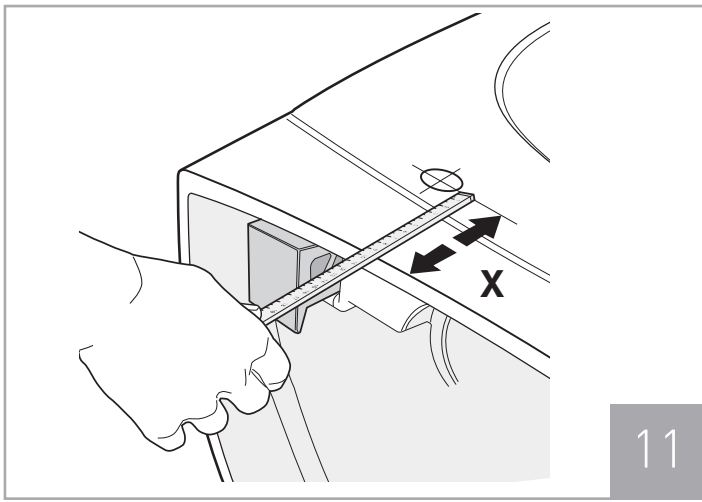


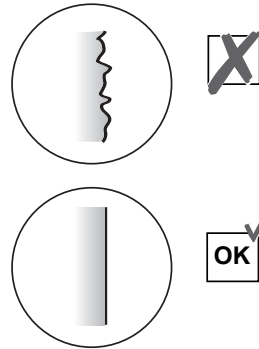
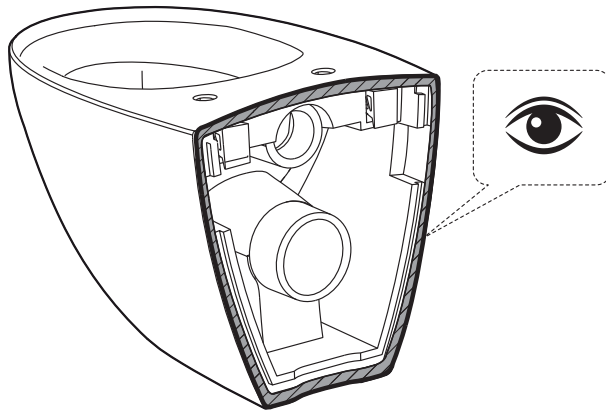
3



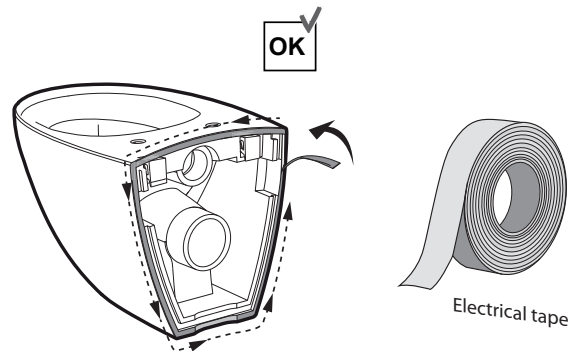
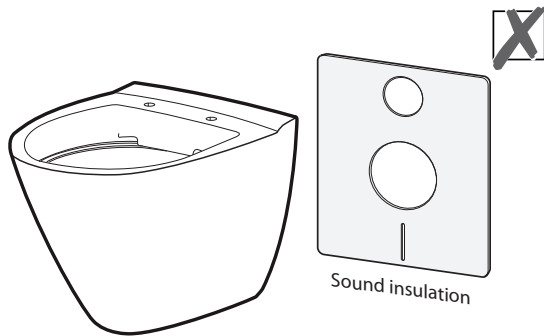
4







1



2

SILICONE  
EN 15651-3. Class XS1



3

Geberit International AG  
Schachenstrasse 77, CH-8645 Jona  
documentation@geberit.com  
www.geberit.com