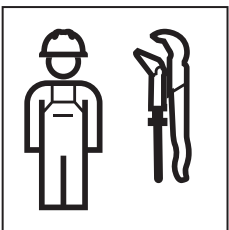


# INSTALLATION MANUAL

MONTERINGSANVISNING  
MONTERINGSANVISNING  
MONTERINGSVEJLEDNING  
ASENNUSOHJE





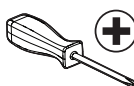
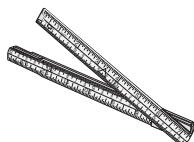
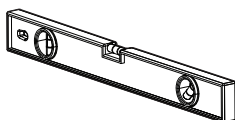
970.197

Care Instructions  
Skötselinstruktion  
Veiledning for stell  
Plejevejledning  
Hoito-Ohje

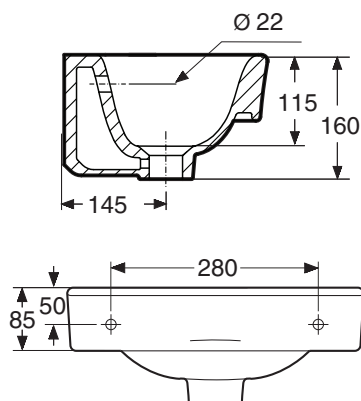
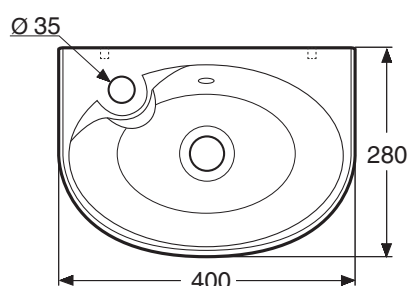


970.105

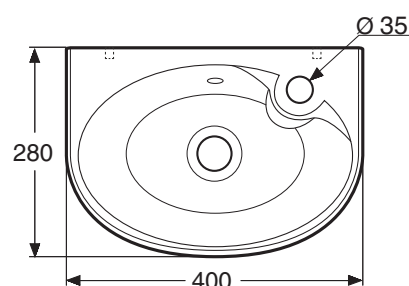
SE: Säker Vatteninstallation



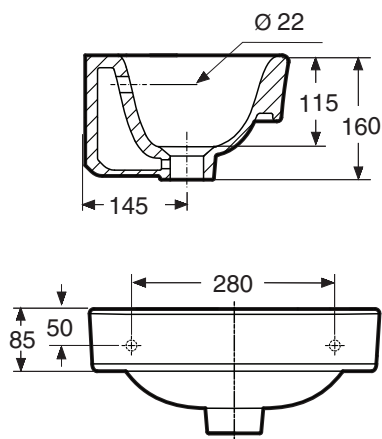
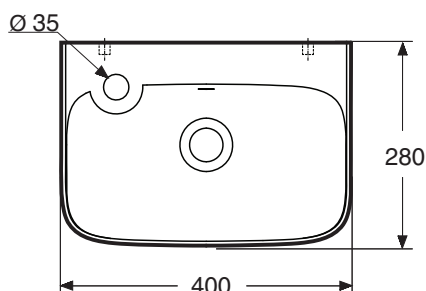
40 cm round -  
tap hole left  
400x280x160



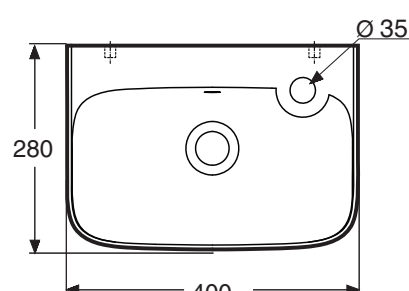
40 cm round -  
tap hole right  
400x280x160



40 cm square -  
tap hole left  
400x280x160

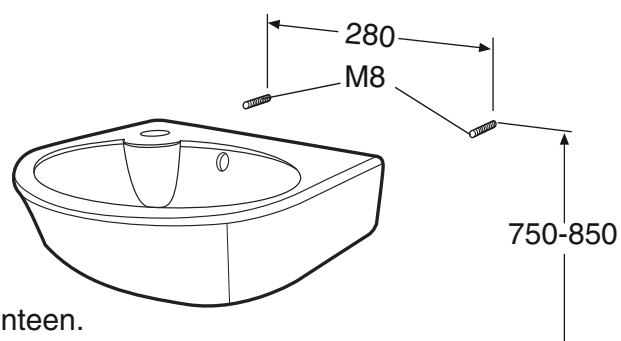


40 cm square -  
tap hole right  
400x280x160



**Huomioi kosteussulku kiinnitysreikiä tehtäessä.**  
**Kontrollera fuktspärren då ni gör fastsättningshå.**  
**Kontroller fuktspärren når det lages hull til boltene.**  
**Take the moisture trap into account when drilling the fixing hole.**

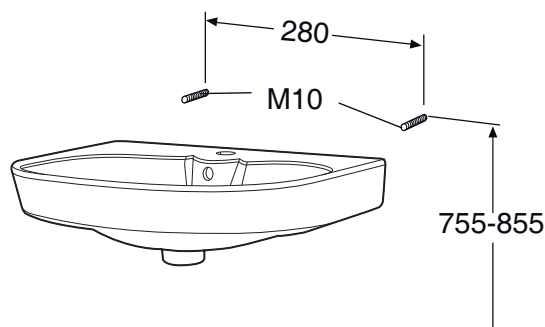
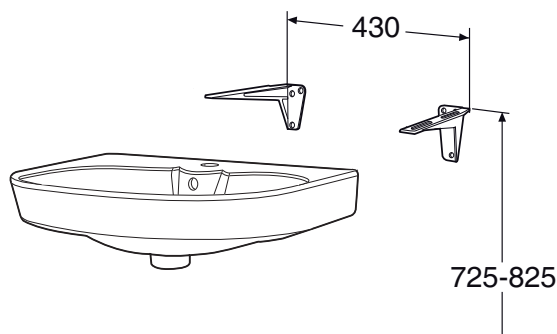
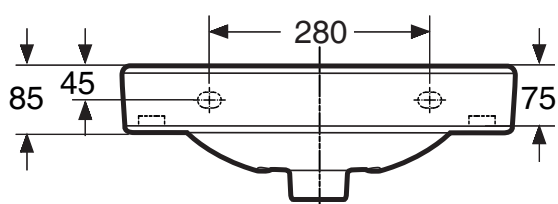
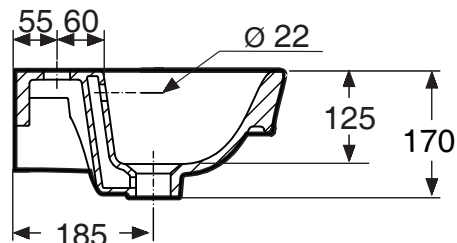
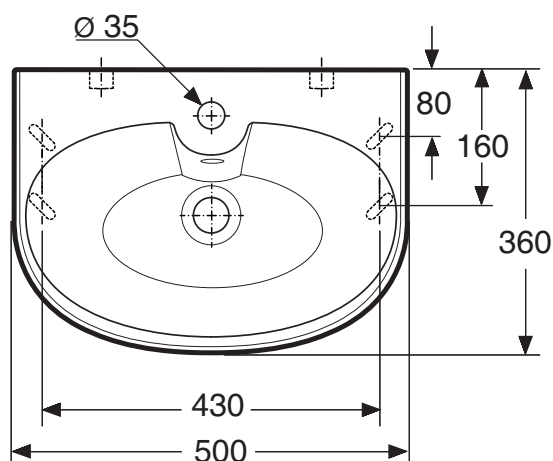
**Huom!** Ruuvikiinnitysaltaat vaativat vahvistetun seinärakenteen.  
**OBS!** Bultupphängda tvättställ fordrar förstärkt väggkonstruktion.  
**OBS!** Servanter for boltemontering krever forsterket veggkonstruksjon.  
**Note!** Screw-fastening basins require a reinforced wall structure.



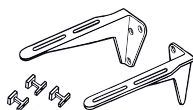
Posliinituotteiden päämitat tol.  $\pm 2$  %  
Porslinsprodukternas huvudmått tol.  $\pm 2$  %  
Porselensproduktenes hovedmål tol.  $\pm 2$  %  
Principal dimensions of the porcelain products  $\pm 2$  %

50 cm round

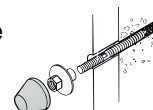
500x360x170



195 mm to be  
ordered separately



M10x120 mm to be  
ordered separately



**Huomioi kosteussulku kiinnitysreikiä tehtäessä.**  
**Kannakkeet tilattava erikseen pituus 195 mm,**  
**ruuvit M10 x 120 mm tilattava erikseen. Huom!**  
Ruuvikiinnitysaltaat vaativat vahvistetun  
seinärakenteen.

**Kontrollera fuktspärren då ni gör fastsättningshål.**  
**Konsolerna beställs separat längd 195 mm, bultar**  
**M10 x 120 mm beställs separat.**

**Obs!** Bultupphängda tvättställ fordrar förstärkt  
väggkonstruktion.

Posliinutuotteiden päämitat tol.  $\pm 2$  %

Porslinsprodukternas huvudmått tol.  $\pm 2$  %

**Kontroller fuktspærren når det lages hull til boltene.**  
**Bærejern bestilles separat 195 mm,**  
**bolter M10 x 120 mm bestilles separat.**  
**OBS!** Servanter for boltmontering krever forsterket  
veggkonstruksjon.

**Take the moisture trap into account when drilling  
the fixing hole.**

**Brackets to be ordered separately length 195 mm,**  
**screws M10 x 120 mm to be ordered separately.**

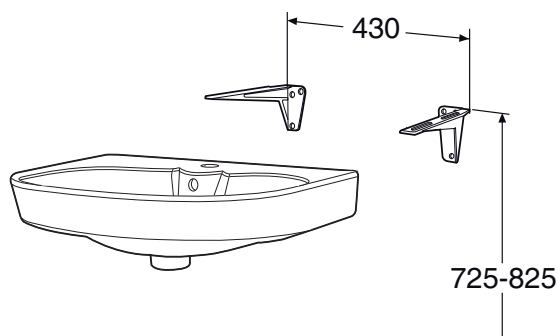
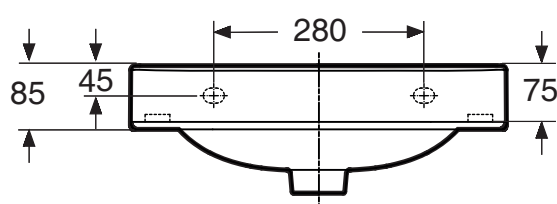
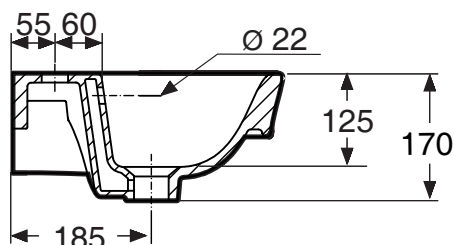
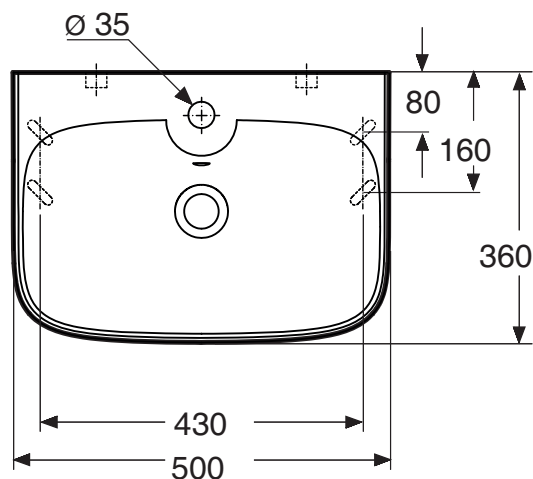
**Note!** Screw-fastening basins require a reinforced  
structure.

Porselensproduktenes hovedmål tol.  $\pm 2$  %

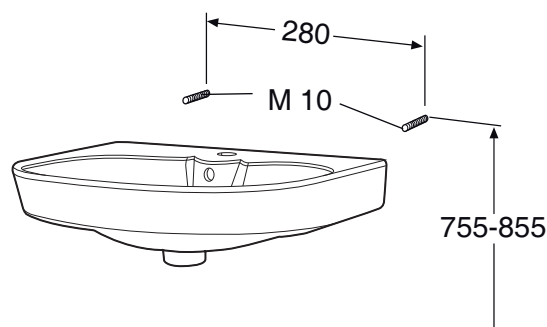
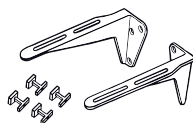
Principal dimensions of the porcelain products  $\pm 2$  %

50 cm square

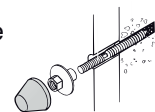
500x360x170



195 mm to be  
ordered separately



M10x120 mm to be  
ordered separately



**Huomioi kosteussulku kiinnitysreikiä tehtäessä.**  
**Kannakkeet** tilattava erikseen pituus 195 mm,  
**ruuvit M10x120 mm** tilattava erikseen.

**Huom!** Ruuvikiinnitysaltaat vaativat vahvistetun  
seinärakenteen.

**Kontrollera fuktspärren då ni gör fastsättningshål.**  
**Konsolerna** beställs separat längd 195 mm, **bultar**  
**M10x120 mm** beställs separat.

**Obs!** Bultupphängda tvättställ fordrar förstärkt  
väggkonstruktion.

Posliinituotteiden päämitat tol.  $\pm 2\%$

Porslinsprodukternas huvudmått tol.  $\pm 2\%$

**Kontroller fuktsperren når det lages hull til boltene.**  
**Bærejern** bestilles separat 195 mm,  
**bolter M10x120 mm** bestilles separat.

**OBS!** Servanter for boltmontering krever forsterket  
veggkonstruksjon.

**Take the moisture trap into account when drilling  
the fixing hole.**

**Brackets to be ordered separately length 195 mm,  
screws M10x120 mm to be ordered separately.**

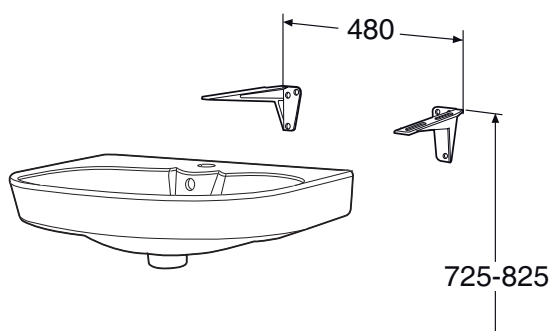
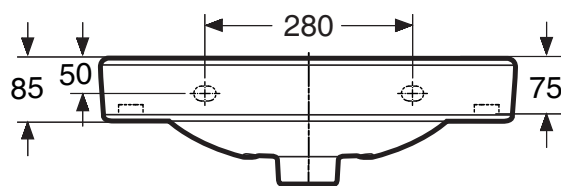
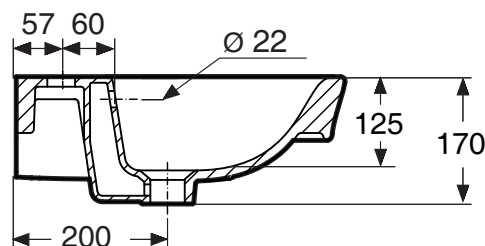
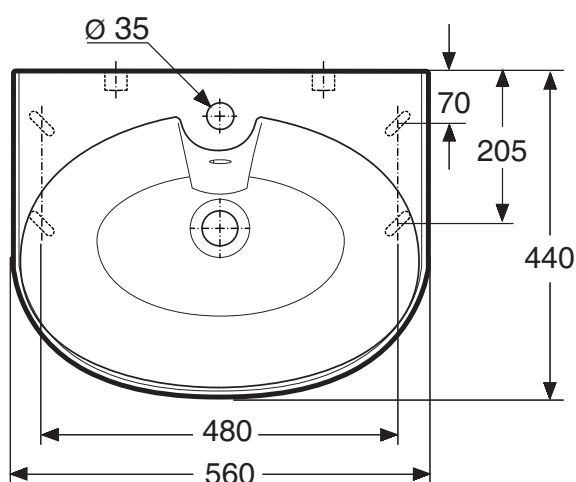
**Note!** Screw-fastening basins require a reinforced  
structure.

Porselensproduktenes hovedmål tol.  $\pm 2\%$

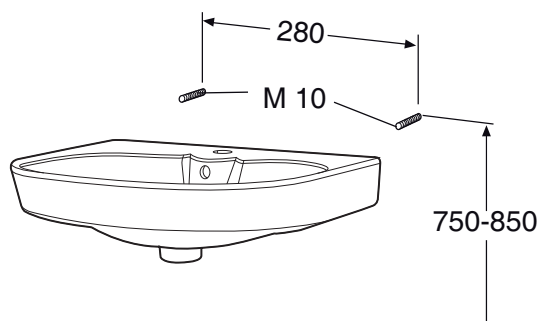
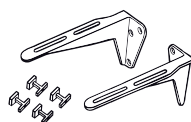
Principal dimensions of the porcelain products  $\pm 2\%$

56 cm round

560x440x170



240/260 mm to be  
ordered separately



M10x120 mm to be  
ordered separately



**Huomioi kosteussulku kiinnitysreikiä tehtäessä.**  
**Kannakkeet tilattava erikseen pituus 240 mm,**  
**ruuvit M10x120 mm tilattava erikseen.**

**Huom!** Ruuvikiinnitysaltaat vaativat vahvistetun  
seinärakenteen.

**Kontrollera fuktspärren då ni gör fastsättningshål.**  
**Konsolerna beställs separat längd 240 mm, bultar**  
**M10x120 mm beställs separat.**

**Obs!** Bultupphängda tvättställ fordrar förstärkt  
väggkonstruktion.

Posliinutuotteiden päämitat tol. ± 2 %

Porslinsprodukternas huvudmått tol. ±2 %

**Kontroller fuktspærren når det lages hull til boltene.**  
**Bærejern bestilles separat 240 mm,**  
**bolter M10x120 mm bestilles separat.**

**OBS!** Servanter for boltmontering krever forsterket  
veggkonstruksjon.

**Take the moisture trap into account when drilling  
the fixing hole.**

**Brackets to be ordered separately length 240 mm,**  
**screws M10x120 mm to be ordered separately.**

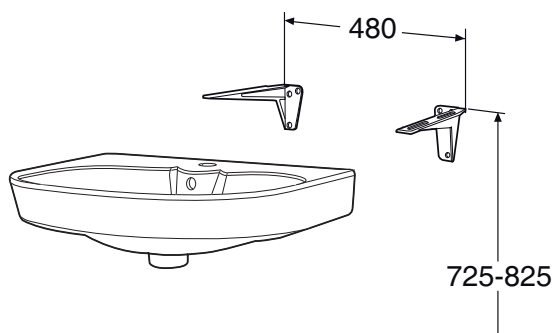
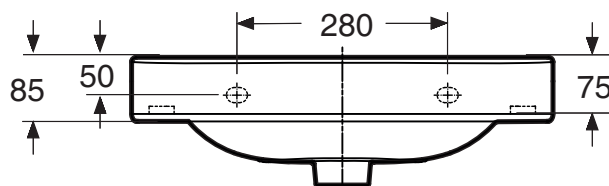
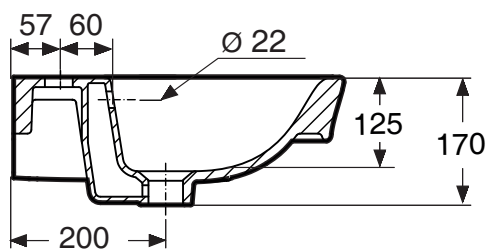
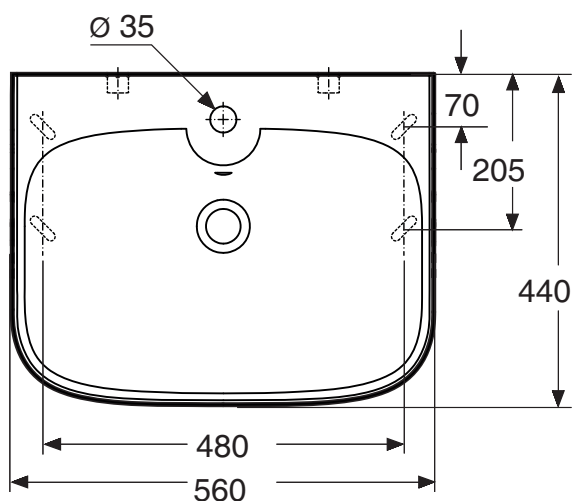
**Note!** Screw-fastening basins require a reinforced  
structure.

Porselensproduktenes hovedmål tol. ±2 %

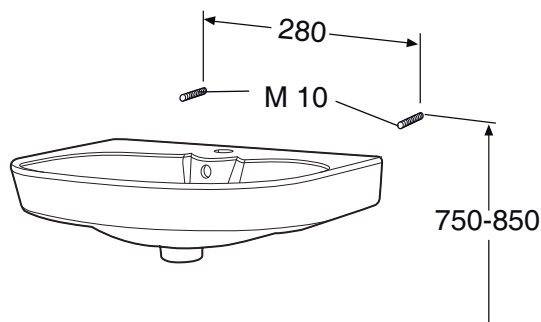
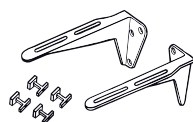
Principal dimensions of the porcelain products ±2 %

## 56 cm square

560x440x170



240/260 mm to be ordered separately



M10x120 mm to be ordered separately



**Huomioi kosteussulku kiinnitysreikiä tehtäessä.**  
Kannakkeet tilattava erikseen pituus 240 mm,  
ruuvit M10x120 mm tilattava erikseen.

**Huom!** Ruuvikiinnitysalkuat vaativat vahvistetun seinärakenteen.

**Kontrollera fuktspärren då ni gör fastsättningshål.**  
Konsolerna beställs separat längd 240 mm, bultar  
M10x120 mm beställs separat.

**Obs!** Bultupphängda tvättställ fordrar förstärkt väggkonstruktion.

Posliinituotteiden päämitat tol. ± 2 %

Porslinsprodukternas huvudmått tol. ±2 %

**Kontroller fuktspærren når det lages hull til boltene.**  
Bærejern bestilles separat. 240 mm,  
bolter M10x120 mm bestilles separat.

**OBS!** Servanter for boltemontering krever forsterket veggkonstruksjon.

**Take the moisture trap into account when drilling the fixing hole.**

**Brackets to be ordered separately length 240 mm, screws M10x120 mm to be ordered separately.**

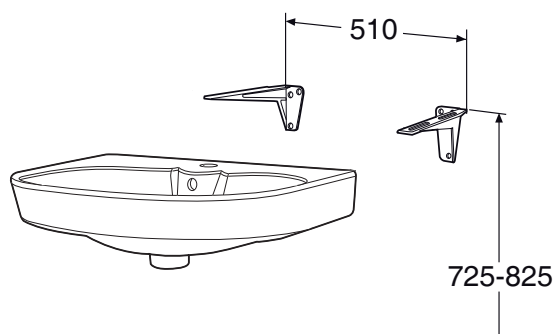
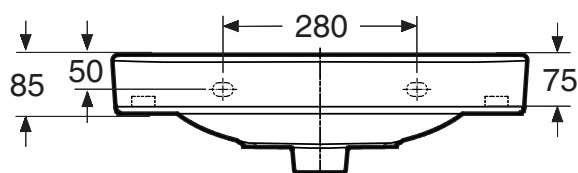
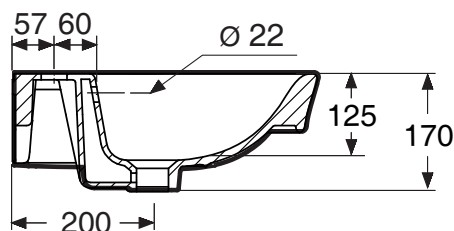
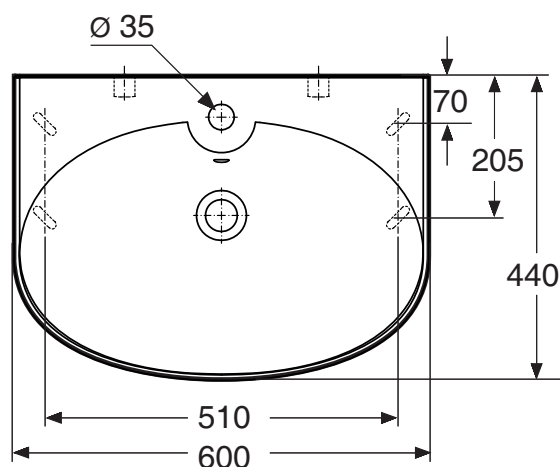
**Note!** Screw-fastening basins require a reinforced structure.

Porselensproduktenes hovedmål tol. ±2 %

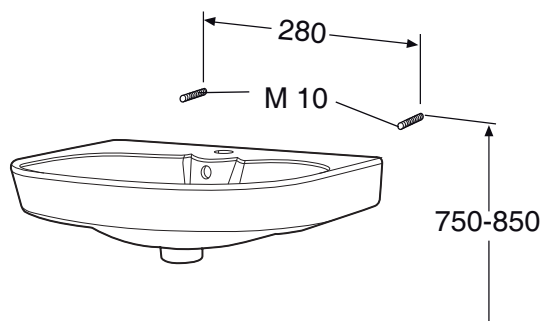
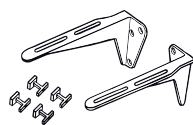
Principal dimensions of the porcelain products ±2 %

60 cm round

600x440x170



240/260 mm to be  
ordered separately



M10x120 mm to be  
ordered separately



**Huomioi kosteussulku kiinnitysreikiä tehtäessä.**  
**Kannakkeet tilattava erikseen pituus 240 mm,**  
**ruuvit M10x120 mm tilattava erikseen.**

**Huom!** Ruuvikiinnitysaltaat vaativat vahvistetun  
seinärakenteen.

**Kontrollera fuktspärren då ni gör fastsättningshål.**  
**Konsolerna beställs separat längd 240 mm, bultar**  
**M10x120 mm beställs separat.**

**Obs!** Bultupphängda tvättställ fordrar förstärkt  
väggkonstruktion.

Posliinutuotteiden päämitat tol. ± 2 %

Porslinsprodukternas huvudmått tol. ± 2 %

**Kontroller fuktspærren når det lages hull til boltene.**  
**Bærejern bestilles separat 240 mm,**  
**bolter M10x120 mm bestilles separat.**

**OBS!** Servanter for boltmontering krever forsterket  
veggkonstruksjon.

**Take the moisture trap into account when drilling  
the fixing hole.**

**Brackets to be ordered separately length 240 mm,**  
**screws M10x120 mm to be ordered separately.**

**Note!** Screw-fastening basins require a reinforced  
structure.

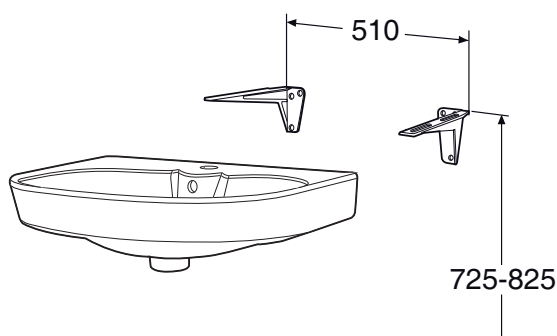
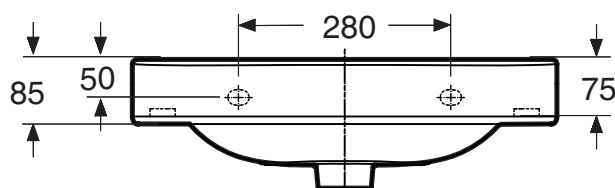
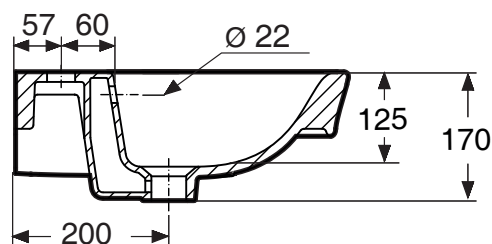
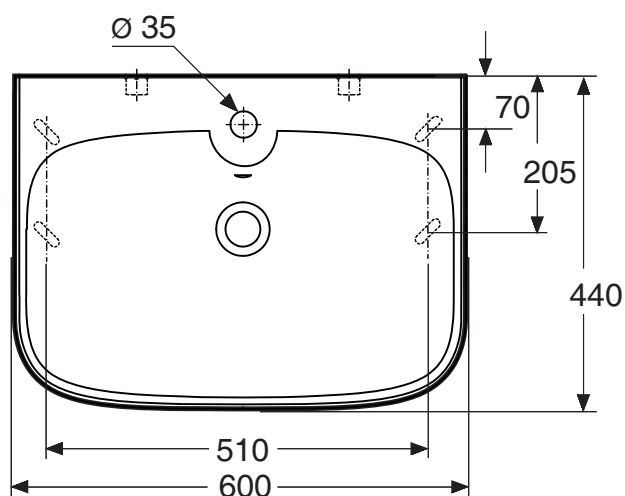
Porselensproduktenes hovedmål tol. ± 2 %

Principal dimensions of the porcelain products ± 2 %

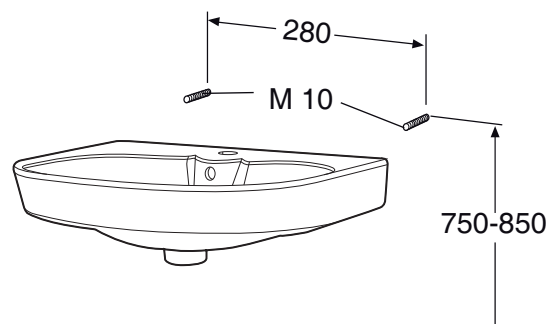
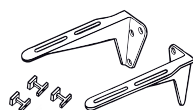


60 cm square

600x440x170



240/260 mm to be  
ordered separately



M10x120 mm to be  
ordered separately



**Huomioi kosteussulku kiinnitysreikiä tehtäessä.**  
**Kannakkeet tilattava erikseen pituus 240 mm,**  
**ruuvit M10x120 mm tilattava erikseen.**

**Huom!** Ruuvikiinnitysaltaat vaativat vahvistetun  
seinärakenteen.

**Kontrollera fuktspärren då ni gör fästsättningshål.**  
**Konsolerna beställs separat längd 240 mm, bultar**  
**M10x120 mm beställs separat.**

**Obs!** Bultupphängda tvättställ fordrar förstärkt  
väggkonstruktion.

Posliinutuotteiden päämitat tol.  $\pm 2\%$

Porslinsprodukternas huvudmått tol.  $\pm 2\%$

**Kontroller fuktsperren når det lages hull til boltene.**  
**Bærejern bestilles separat 240 mm,**  
**bolter M10x120 mm bestilles separat.**

**OBS!** Servanter for boltmontering krever forsterket  
veggkonstruksjon.

**Take the moisture trap into account when drilling  
the fixing hole.**

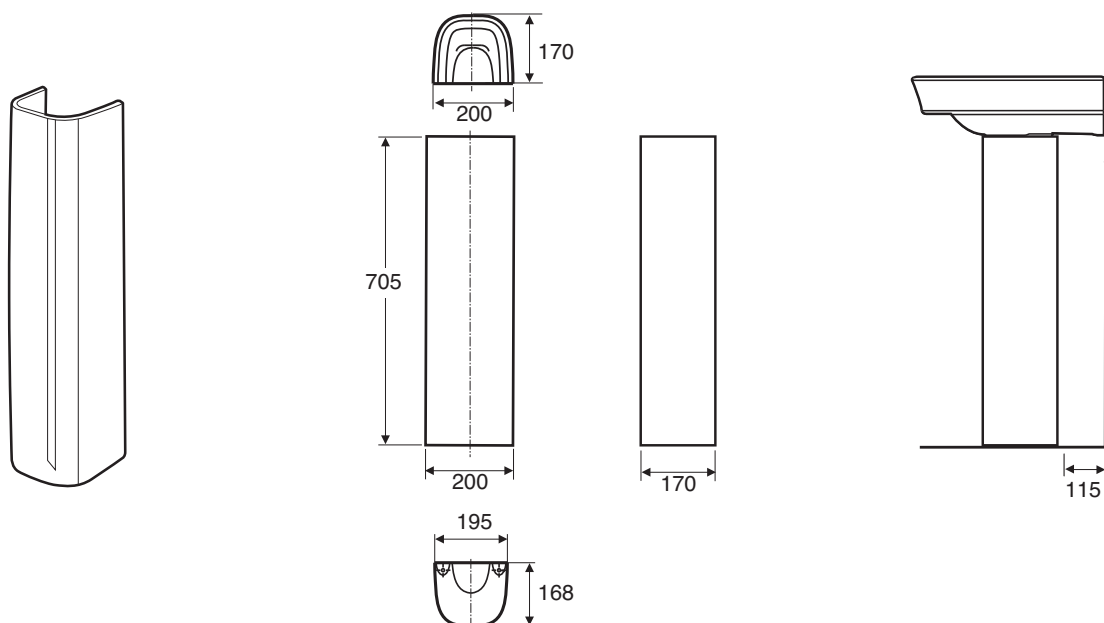
**Brackets be ordered separately length 240 mm,**  
**screws M10x120 mm to be ordered separately.**

**Note!** Screw-fastening basins require a reinforced  
structure.

Porselensproduktenes hovedmål tol.  $\pm 2\%$

Principal dimensions of the porcelain products  $\pm 2\%$

## Pedestal / Tvättställspelare / Pesualtaan / Helsøylen



Pesualtaan jalka asennetaan pesualtaan yhteydessä siten, että pesuallas lepää jalan päällä.  
Sopii pesualtaksiin 56 cm and 60 cm, round and square.

Tvättställspelaren bör monteras tillika med tvättstället, så att tvätt stället vilar på pelaren.  
Passar till tvättställ 56 cm and 60 cm, round and square.

Helsøylen bør monteres sammen med servanten, slik at servanten hviler på søylen  
Passer følgende servanter 56 cm and 60 cm, round and square.

The pedestal should be installed together with the washbasin so that the washbasin rests on the pedestal.  
Suitable for washbasins 56 cm and 60 cm, round and square.



