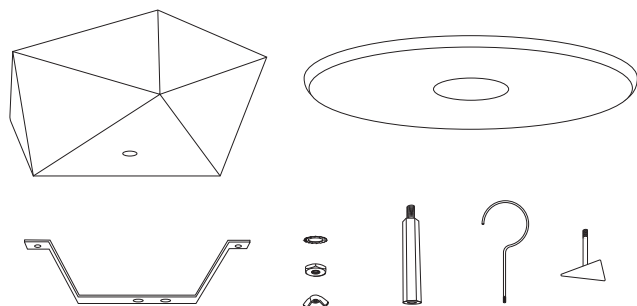


# Zeneos

## Martti Jännes

INNOLUX

Asennusohje / Installation manual / Bruksansvisning  
V.21A\_EMÄ



Suositteltu valonlähde / Recommended lightsource  
/ Rekommenderade ljuskällan:

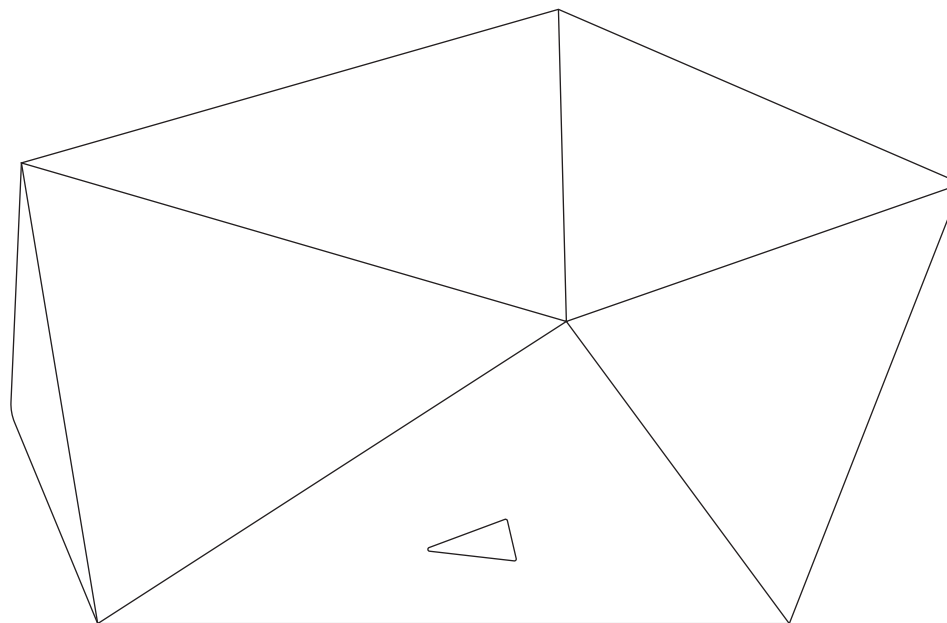
4 x 5 - 8W  
LED  
E27



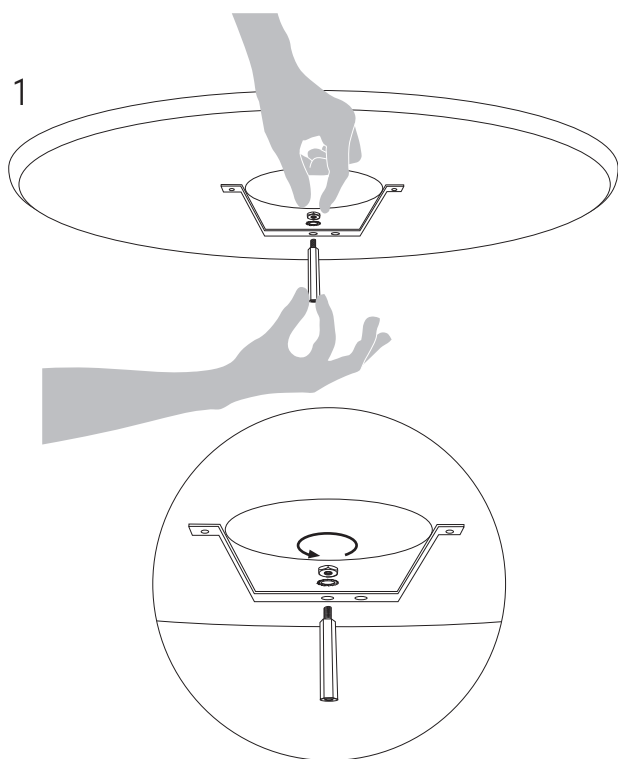
HUOM: Käännä sähköt pois sähkökeskuksesta ennen asennusta.  
NOTICE: Switch off the main electricity before installing.  
OBS: Vänd av electricitet från elcenter.

2 vuoden takuu aika / 2 year guarantee / 2 års garanti

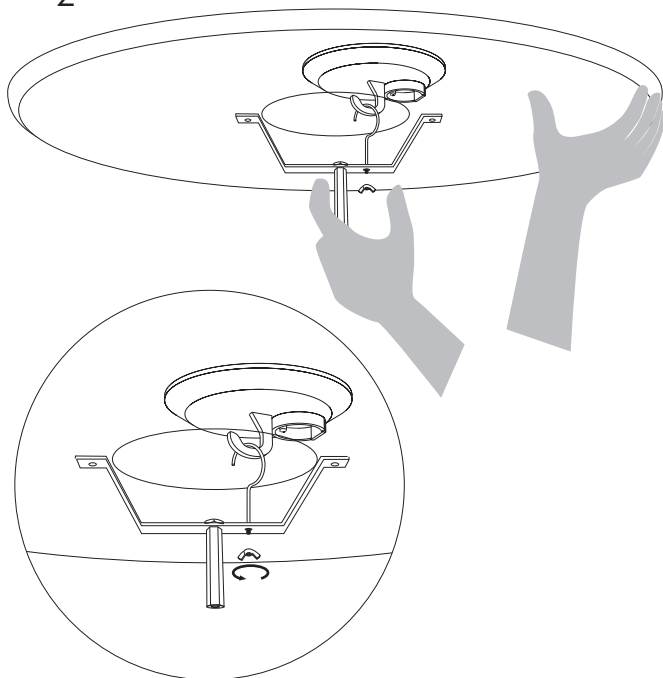
INNOJOK OY, Sirrikuja 3 L, 00940 Helsinki Finland,  
p.+358(0) 9 4789 2200



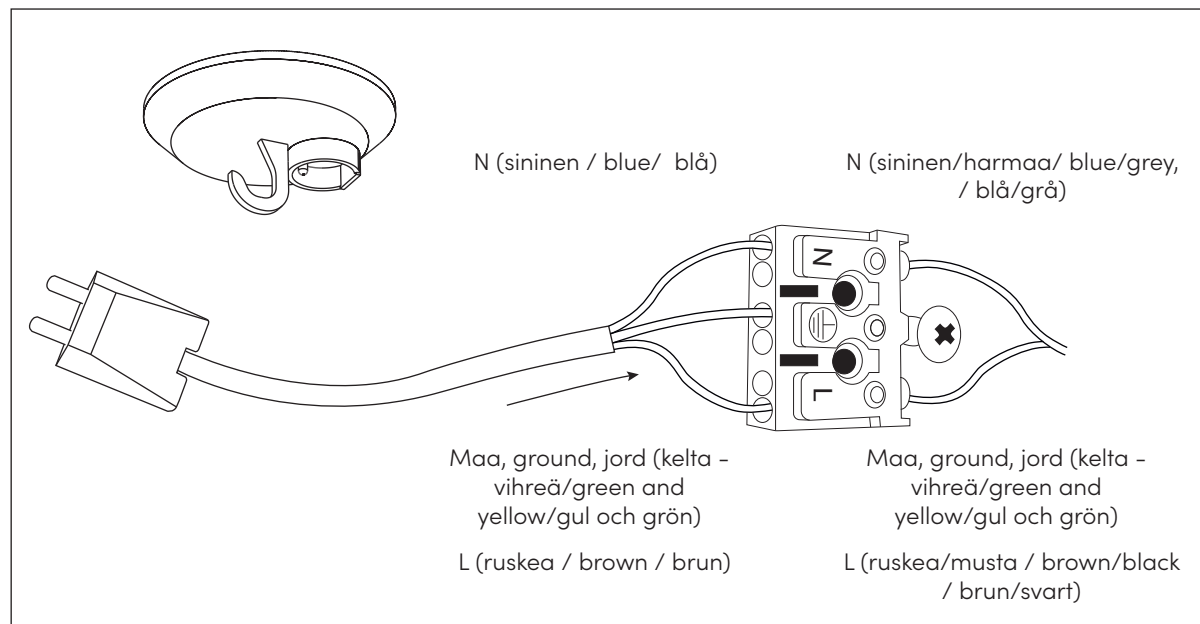
1



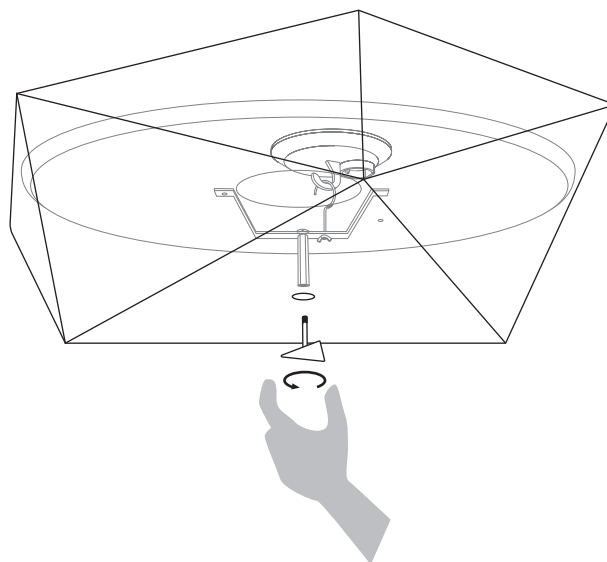
2



5



3



4

